

# PLUG & BIM

ELECTRICAL SYSTEMS READY TO INSTALL



# PLUG & BIM

## ELECTRICAL ENGINEERING THAT CONNECTS *DESIGN, CALCULATION & EXECUTION*

We are not a traditional electrical design office, and we are not just a BIM modeling company. **Plug & BIM** delivers execution-ready electrical engineering that connects design, cost calculation, prefabrication, installation, and work preparation.

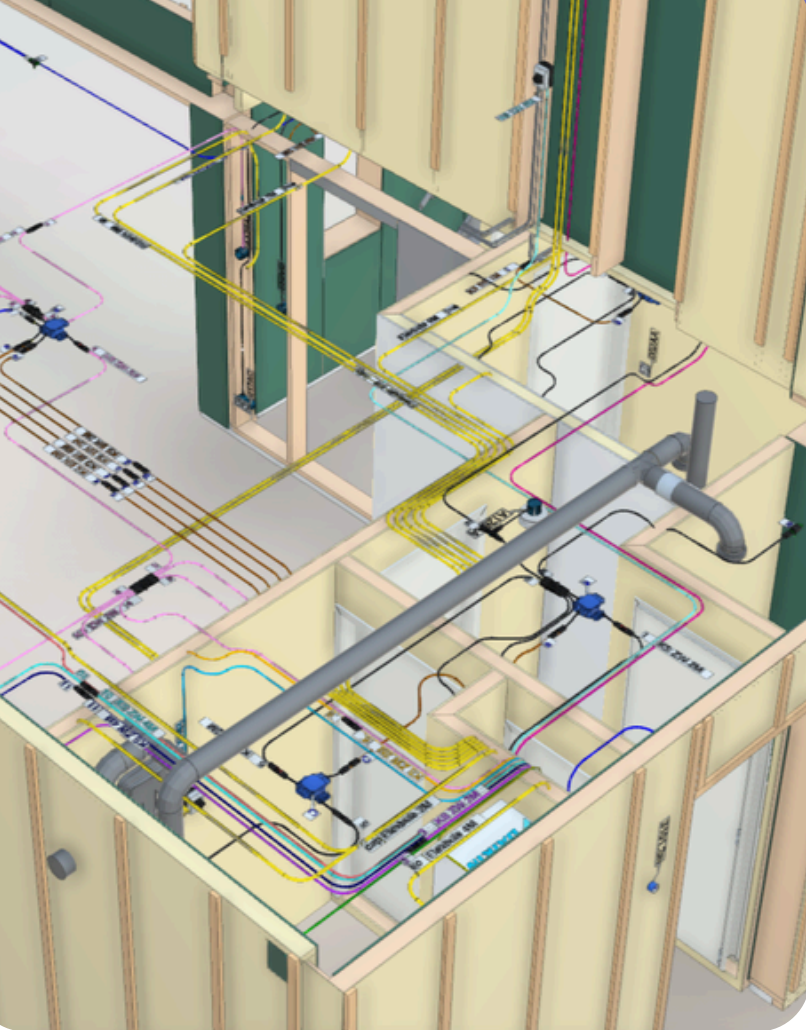
We have built our own **BIM-based engineering systems** to standardize and accelerate the entire process. This allows us to work faster, reduce errors, and deliver consistent quality across every project.

Building this capability in-house takes time, investment, and continuous management. With **Plug & BIM**, it is already in place and ready to scale with your projects.

We do not deliver drawings. We deliver **electrical systems that can be built, calculated, and prepared. *Electrical Engineering as a Service.***

- Residential Engineering for scalable housing.
- Prefab Engineering for modular construction.
- Hospitality and Utility Engineering for commercial environments.

Our models act as a single source of truth, helping you reduce costs, speed up delivery, eliminate errors, and grow without increasing internal capacity.



## ONE MODEL - MULTIPLE OUTPUTS - TOTAL CONTROL

Every project is delivered as a **LOD400/500 BIM model**, used across the entire workflow:

### Calculation:

- Automated quantity take-offs
- Excel exports for estimators
- Component-level insights
- Direct input for pricing

From model → to cost in one step

### Production & Prefabrication:

- Fully defined electrical systems
- Optimized for modular construction
- Suitable for plug & play and traditional installations

### Installation:

- Clear routing and positioning
- Reduced installation time
- Minimal interpretation required on site

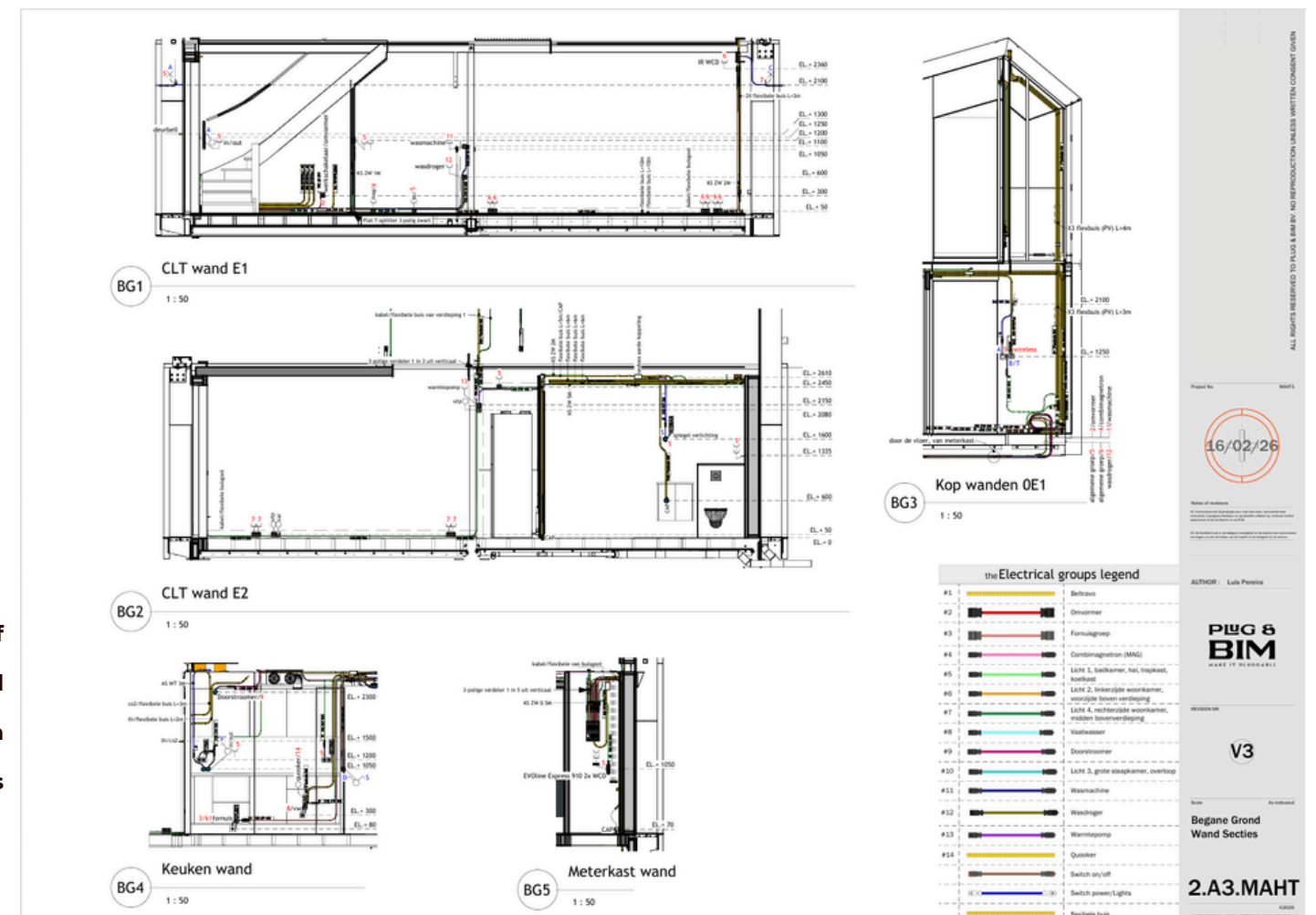
### Work Preparation:

We significantly reduce the workload of work preparation.

- Automated material lists
- Clear installation logic
- Direct procurement input

Less work. Fewer errors. Faster execution.

Example of  
2D wall  
section  
drawings



## WHY CLIENTS PREFER TO WORK WITH **PLUG & BIM?**

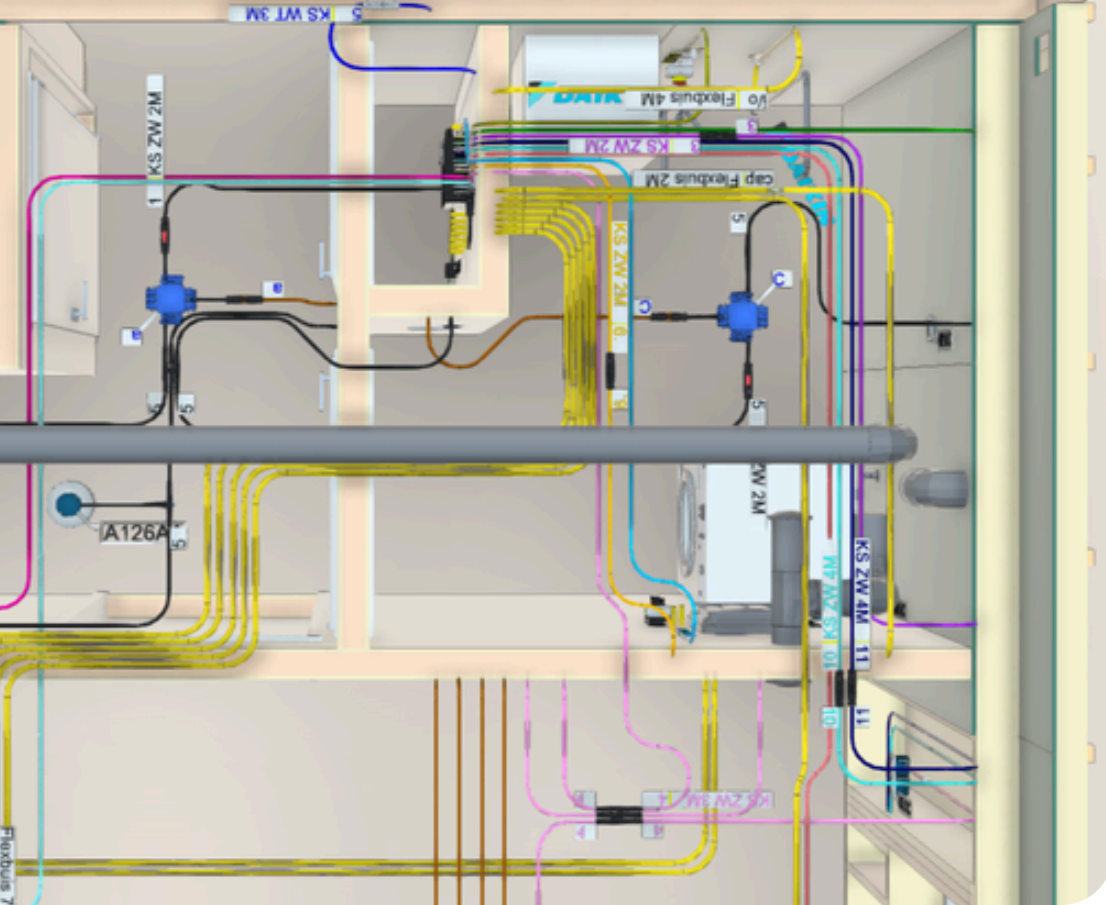
# PLUG & BIM

### PLUG & BIM vs. INTERNAL ENGINEER

	PLUG & BIM*	INTERNAL ENGINEER
Monthly Cost	Fixed, predictable	€4,500 –€7,500+
Setup Time	Immediate start	Months to hire and train
Flexibility	Scale up or down	Fixed capacity
Expertise	Specialized BIM team	One profile
Continuity	Always covered	Risk of absence
Tools & Licenses	Included	Extra costs
Management	No overhead	Requires management
Efficiency / Productivity	Optimized workflows (100%)	Varies by person (avg 60/70%)

\* Reduce Failure Costs  
Accelerate Projects  
Improve Procurement & Logistics  
Solve Capacity Challenges

Hiring an internal BIM engineer may seem logical but in practice, it comes with hidden costs and limitations. **We don't increase engineering cost, we reduce total project cost.**



# PLUG & BIM

## STRATEGIC COLLABORATION & LONG-TERM VALUE

Together with clients, we develop:

- Standardization
- Product libraries
- Templates
- Repeatable engineering structures

This results in:

- Faster future projects
- Consistent quality
- Long-term efficiency gains

*Plug and BIM is a scalable engineering partner that connects design, calculation, and execution while reducing workload across engineering, calculation, and work preparation.*

## HOW DO WE START **WORKING TOGETHER?**

1

### **Exploratory Meeting**

We like to start with a focused session to understand your needs, challenges, and project goals. At the same time, we show how we work, what's possible, and what you can expect using real examples from past projects.

2

### **Pilot Project (Recommended)**

Before committing long-term, we suggest a small pilot. This allows both sides to test collaboration, communication, file exchange, and technical alignment in a real project environment.

3

### **Evaluation & Alignment**

Once the first version of the pilot is delivered, we sit together to evaluate the collaboration. We review what worked, what can improve, and align on how to move forward.

4

### **Scale with the Right Plan**

If you're satisfied, you can choose the best engineering plan that fits your needs. You can always scale up/down as your demand or project complexity grows or reduces.

+599 96995382

CURACAO

INFO@PLUGANDBIM.COM

WWW.PLUGANDBIM.COM

## ELECTRICAL SYSTEMS *READY TO INSTALL*

### ENGINEERING PLANS COMPARISON

#### WHAT'S INCLUDED?

	START	MOST POPULAR GROW	SCALE	CUSTOM PARTNER
IFC BIM model (LOD400/500)	✓	✓	✓	✓
Material data and quantity take-offs	✓	✓	✓	✓
Excel exports for cost estimation	✓	✓	✓	✓
2D engineering drawings		✓	✓	✓
2D wall section drawings			✓	✓
Supply chain split (procurement data)			✓	✓
Company-branded drawing layouts		✓	✓	✓
Custom templates (articles & descriptions)				✓
Product modeling (Revit / RFA libraries)				✓
Standard details and engineering structures				✓
Consulting and technical advisory				✓
Fully integrated into the internal process				✓

# PLUG & BIM

### PILOT PROJECT (Paid)

The pilot project is a paid test collaboration of a minimum of 30 hours to ensure a meaningful evaluation of the workflow and results. Hours may increase depending on project complexity.

We recommend a small, well-defined scope for efficiency, this allows both sides to quickly validate communication, speed, quality, and technical alignment.

The pilot is not about completing a full project, but about testing how we work together in a real scenario. A pilot is considered complete once the first draft is delivered and approved, allowing for a smooth transition into a long-term engineering plan.

There is no long-term commitment after the pilot. It is designed to give you clarity before scaling.

*Experience our workflow and results before committing.*

## ENGINEERING PLANS COMPARISON

WHAT TO EXPECT?	START	MOST POPULAR GROW	SCALE	CUSTOM PARTNER
Hours	40 hrs	80 hrs	120 hrs	Custom
Rate per Hour	€65/hour	€70/hour	€75/hour	
Added Hours for the same bundle rate			✓	✓
Additional Hours per rate €95/hour	✓	✓		
Additional Information				**
Perfect for:	<ul style="list-style-type: none"> <li>• Small installers</li> <li>• Occasional engineering needs</li> <li>• BIM adoption phase</li> <li>• Flexible low-volume support</li> </ul>	<ul style="list-style-type: none"> <li>• Growing contractors</li> <li>• Steady monthly workload</li> <li>• No in-house BIM</li> <li>• Consistent engineering support</li> </ul>	<ul style="list-style-type: none"> <li>• Large installers</li> <li>• Continuous workload</li> <li>• Multiple parallel projects</li> <li>• Fast turnaround needs</li> </ul>	<ul style="list-style-type: none"> <li>• Enterprise clients</li> <li>• Full engineering outsourcing</li> <li>• Strategic partnerships</li> <li>• High-volume operations</li> </ul>
PRICING	€2,600	€5,600	€9,000	From €25,000

### PILOT PROJECT

- Minimum: 30 hours
- Rate: €75/hour
- One-time project

### ROLLOVER POLICY

- up to 50% rollover
- valid within the same calendar year
- reset on December 31
- expires upon termination

### CONTRACT TERMS

- monthly subscription
- 2-months notice period to cancel or scale down

\*\*All services are modular and scalable based on client needs

## YOU PICKED YOUR PLAN, NOW **HOW DO WE START A PROJECT?**

### PROJECT INPUT REQUIRMENTS TO INITIATE ENGINEERING

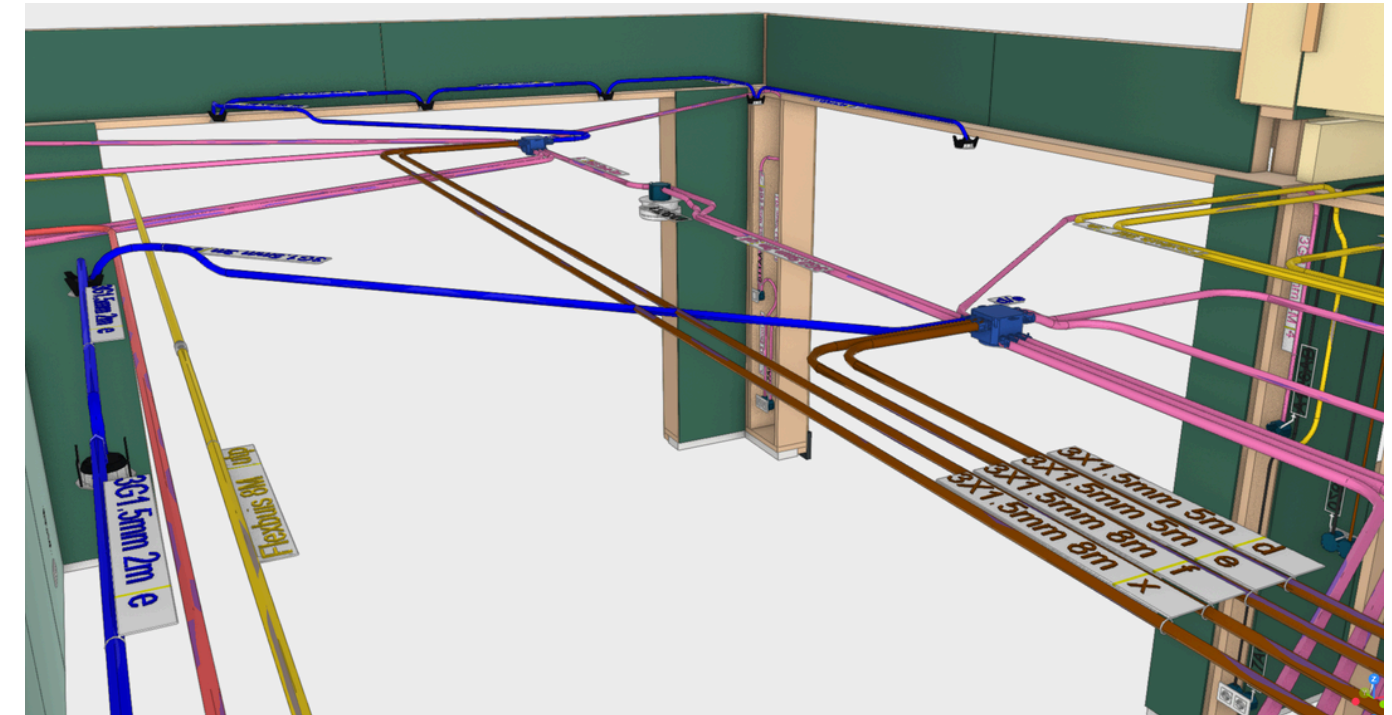
Starting to work with us is easy! Once you have chosen the perfect plan for your engineering needs, we will initiate the preparations for your projects. The following information is required per project to ensure accuracy and efficiency in every project delivery:

- ✓ Electrical floor plans (including positions and installation heights) – DWG/PDF
- ✓ IFC model of the architectural design (incl. installations if available)
- ✓ Power ratings / load overview of all equipment and systems
- ✓ Kitchen and technical installation drawings (if applicable)
- ✓ Structural constraints (e.g. walls, openings, prefab limitations)

#### OPTIONAL (recommended for optimal results):

- ✓ Equipment schedules (HVAC, pool, pumps, etc.)
- ✓ Client preferences / standards (if applicable)

# PLUG & BIM



Example of a conventional electrical installation

This is how we guarantee speed, accuracy, and cost control.

# PLUG & BIM

ELECTRICAL SYSTEMS READY TO INSTALL